

Acadia University Heating System

Craig Quartermain
Plant Operations Manager
Physical Plant Services

November 2017

Campus Wide Consumption

- \$1.81 million in electricity consumption last year (16.4 million kWh)
- \$1.97 million annually in heating consumption last year (Natural Gas)
- 30 million gallons of water consumed last year (down from a peak of 52 million)

Residence Consumption

- \$366 thousand in electricity consumption last year (20.3% of campus consumption)
- \$785 thousand in heating consumption last year (39.8% of campus consumption)
- 36.7% of water consumption was by residences

Central Heating Plant



Boilers



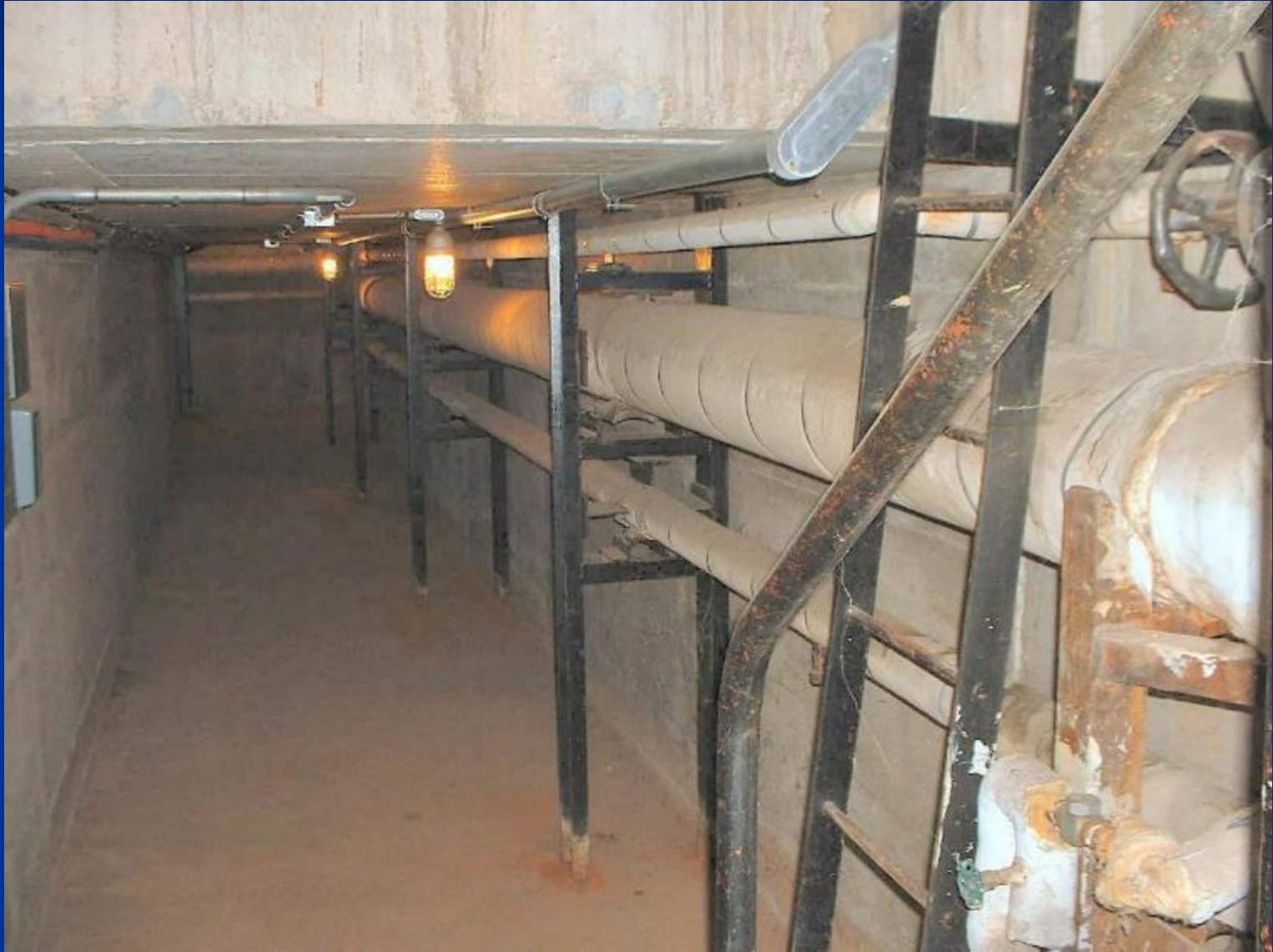
2
7
5
0

H
P

Output Info

- 24/7 operation
- 5 operators, 1 Chief Eng
- 2750 total horsepower
- Steam pressure 75 psi
- Oil cost of \$2.6 million 2013 Forecast
- 2016 Natural Gas consumption \$1.97 million

Steam Pipes in Tunnel



Steam Pipe Connects to Building



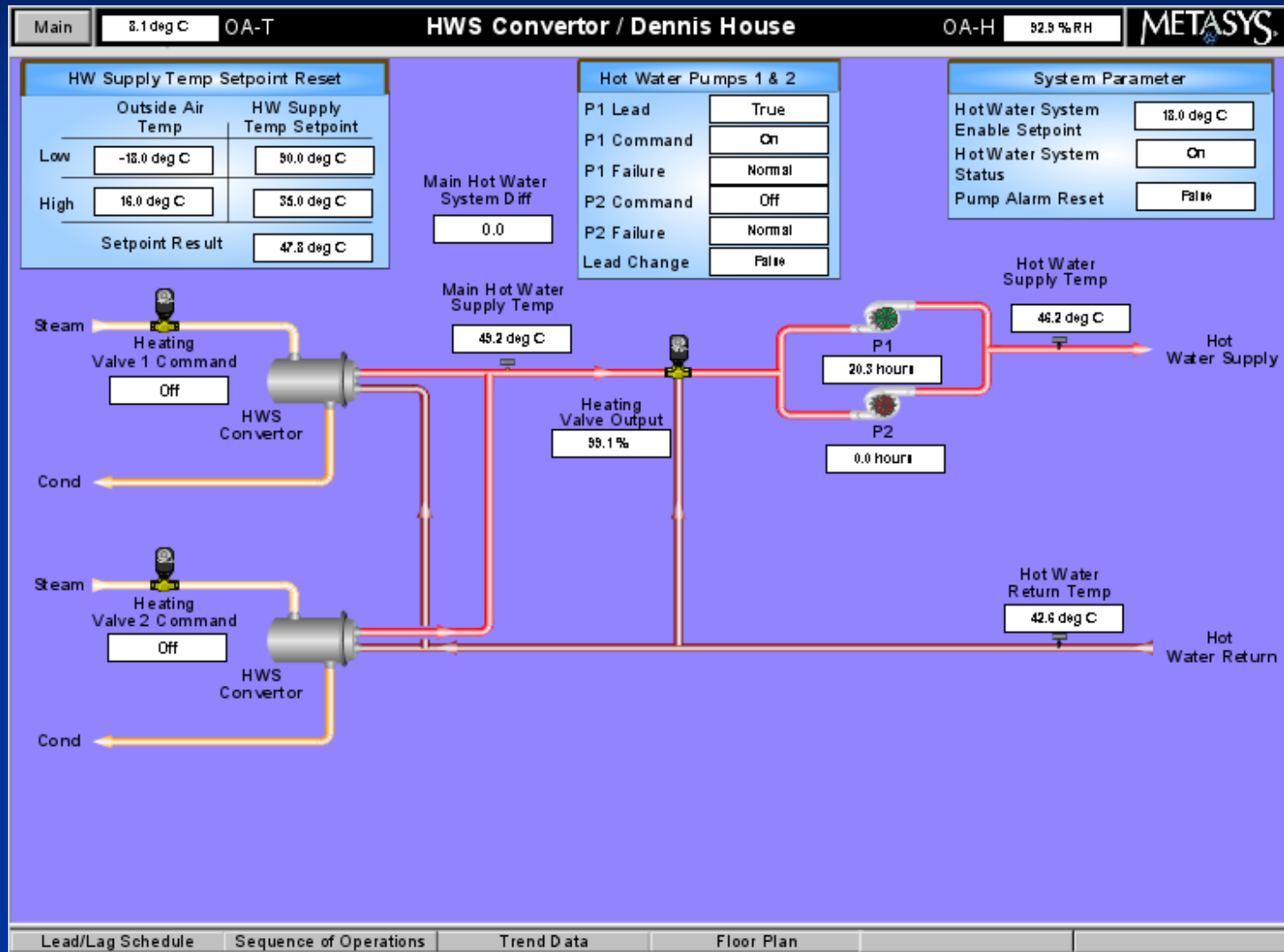
Distribution Piping



Heat Exchanger Cut-a-way



Heat Exchanger Controls



Air Handling Unit

H
e
a
t
e
d

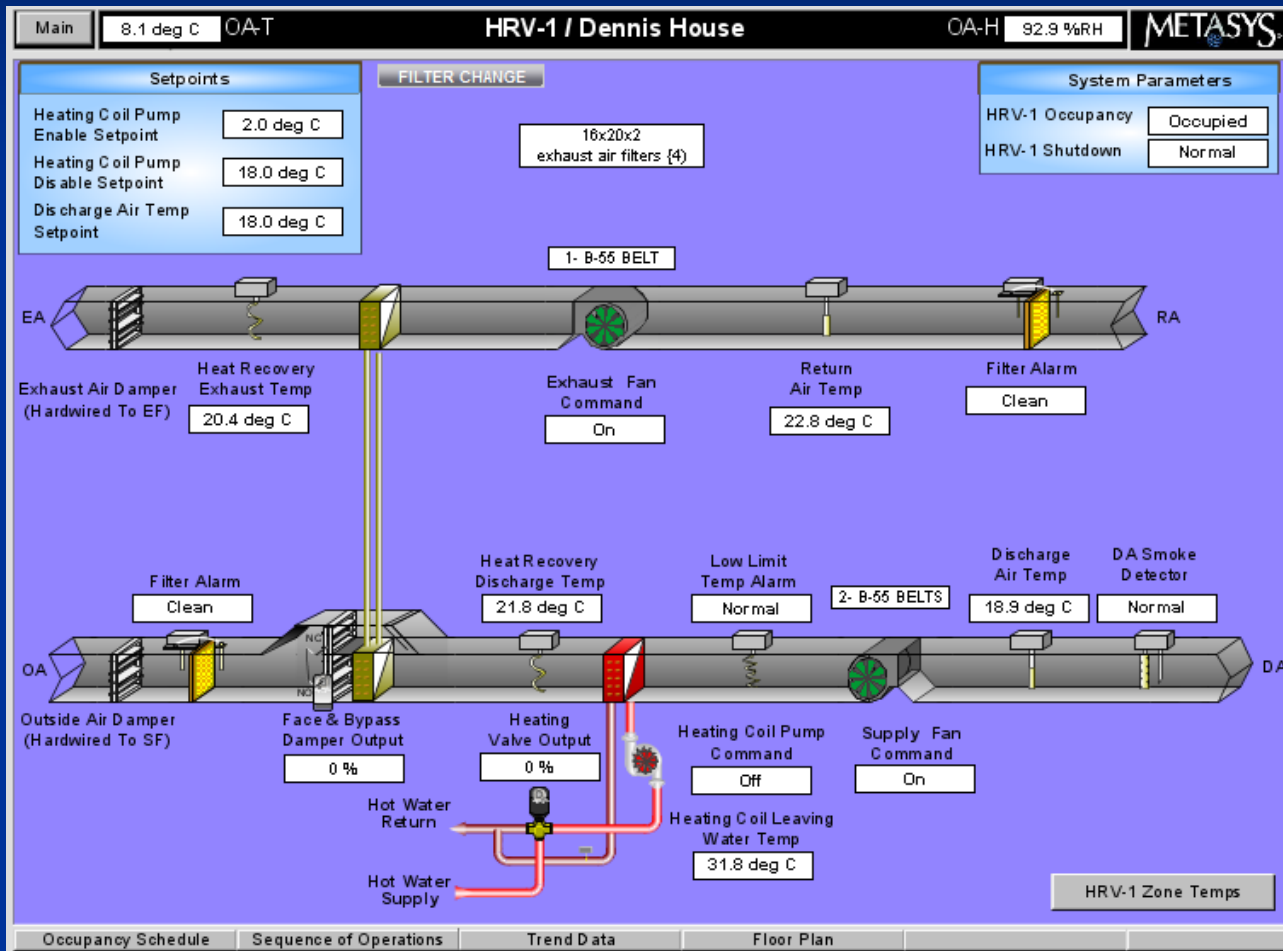
A
i
r



F
r
e
e
s
h

A
i
r

Air Handling Unit Controls



Room Temperature Control

Roy Jodrey Hall



Dennis, Eaton, Christofor Hall and Whitman



War Memorial House, Raymond, Crowell Tower, Seminary

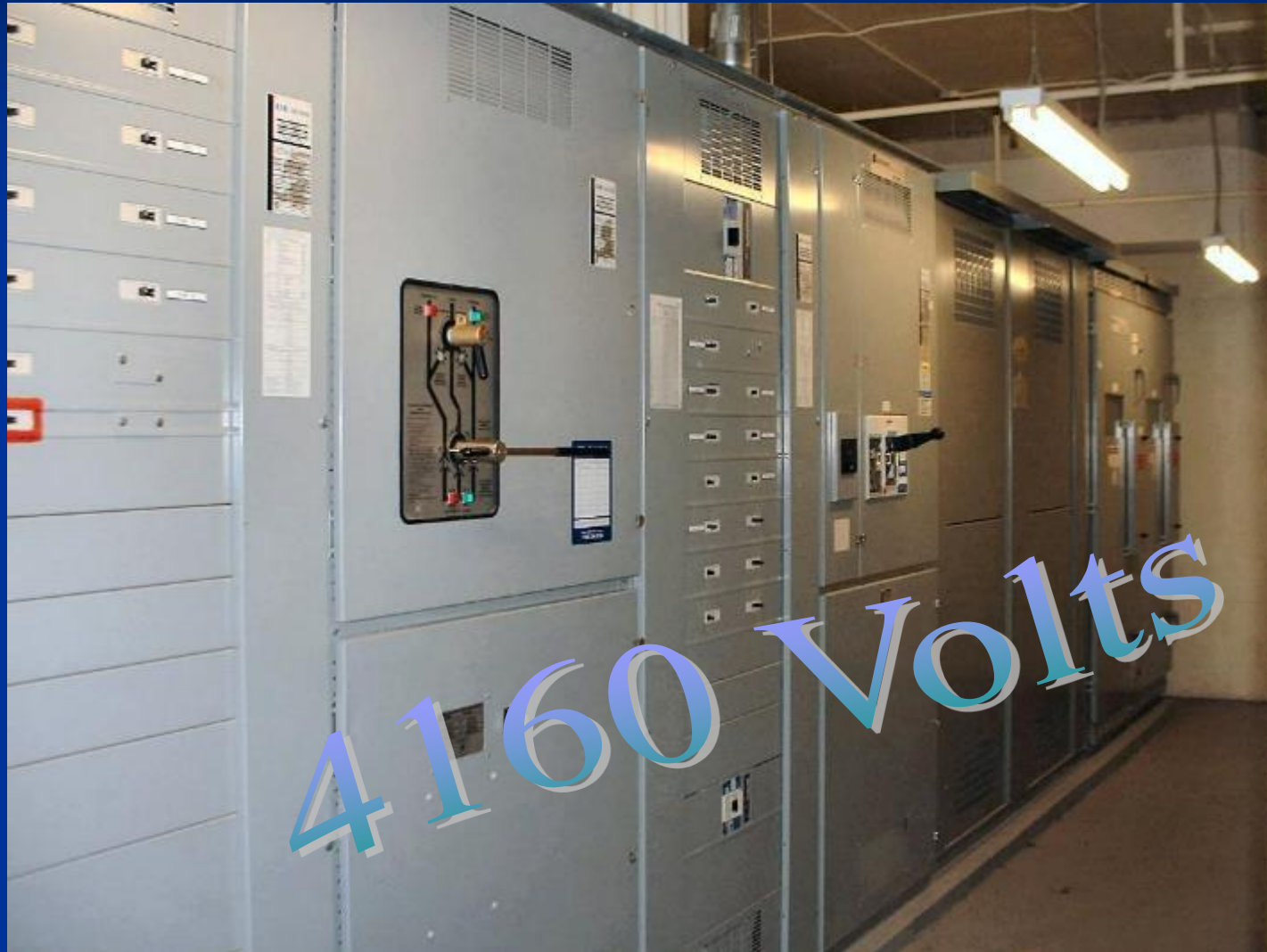


Chase Open Window in Feb

- Use your thermostat!



Main Electrical Distribution Disconnects



Electrical & Alarm Panels

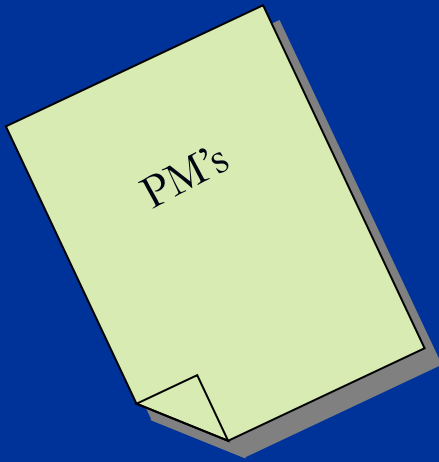


Work Order Types

- **Urgent**: This type of maintenance service request is such that failure to act immediately will endanger University operations procedures for urgent corrective action are by the fastest means with anticipated response the same day.
- **Routine**: Specified maintenance required. This type of maintenance work request is such that the main University functions will not be significantly affected. Response time will be 5 working days or less, and work will be completed within 10 days
- **Planned**: Routine maintenance required. These work orders are subject to resource allocation and may be combined with other work orders

Maintenance & Repair Requests

- Approx. 750 work orders per month
- Approx. 350 Preventative Maintenance work orders per month



Physical Plant Hours of Operation

- Full Maintenance & Admin Staff
 - Monday to Friday 8:00-4:30
- Minimum Maintenance & Admin Staff
 - Monday to Friday 4:30pm-10:00pm
 - Saturday & Sunday 8:00am-4:30pm
 - Holidays (to be determined based on occupancy)
- Urgent After Hours Requests
 - Call Security ext. 1103 or 542-7111
 - Security is 24/7 operation



Work Request Communication

- Receiving Work Order Requests (Residence Internal)
 - Point person- SRA/alternate
 - Review/inspect work requests (duplication, non-issue, urgent/non-urgent, damage)
- Submitting Work Order Requests (to Physical Plant)
 - Call or email Physical Plant ext. 1444
(physical.plant@acadiau.ca)
 - Web Request (InSite) when available to SRA's

Questions ???